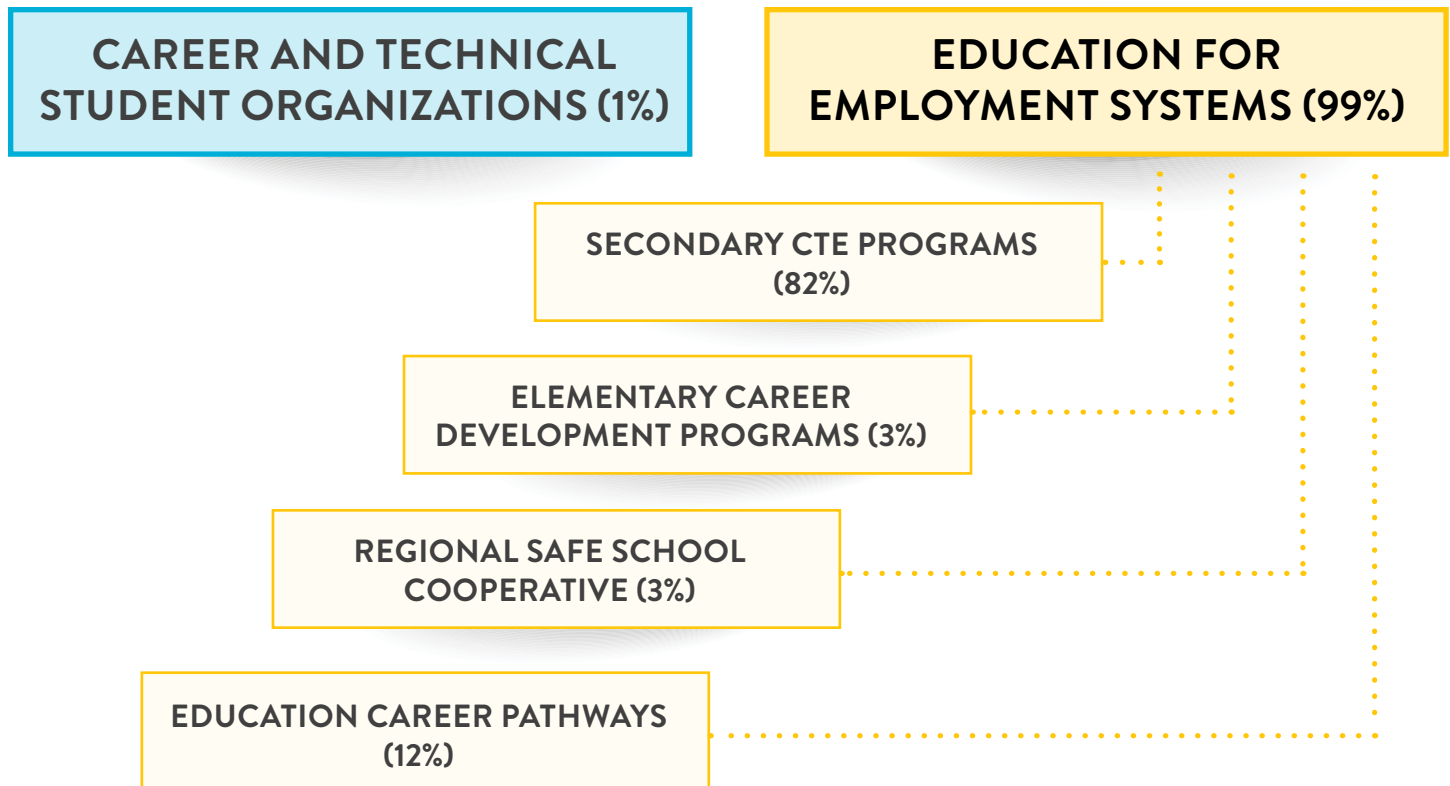
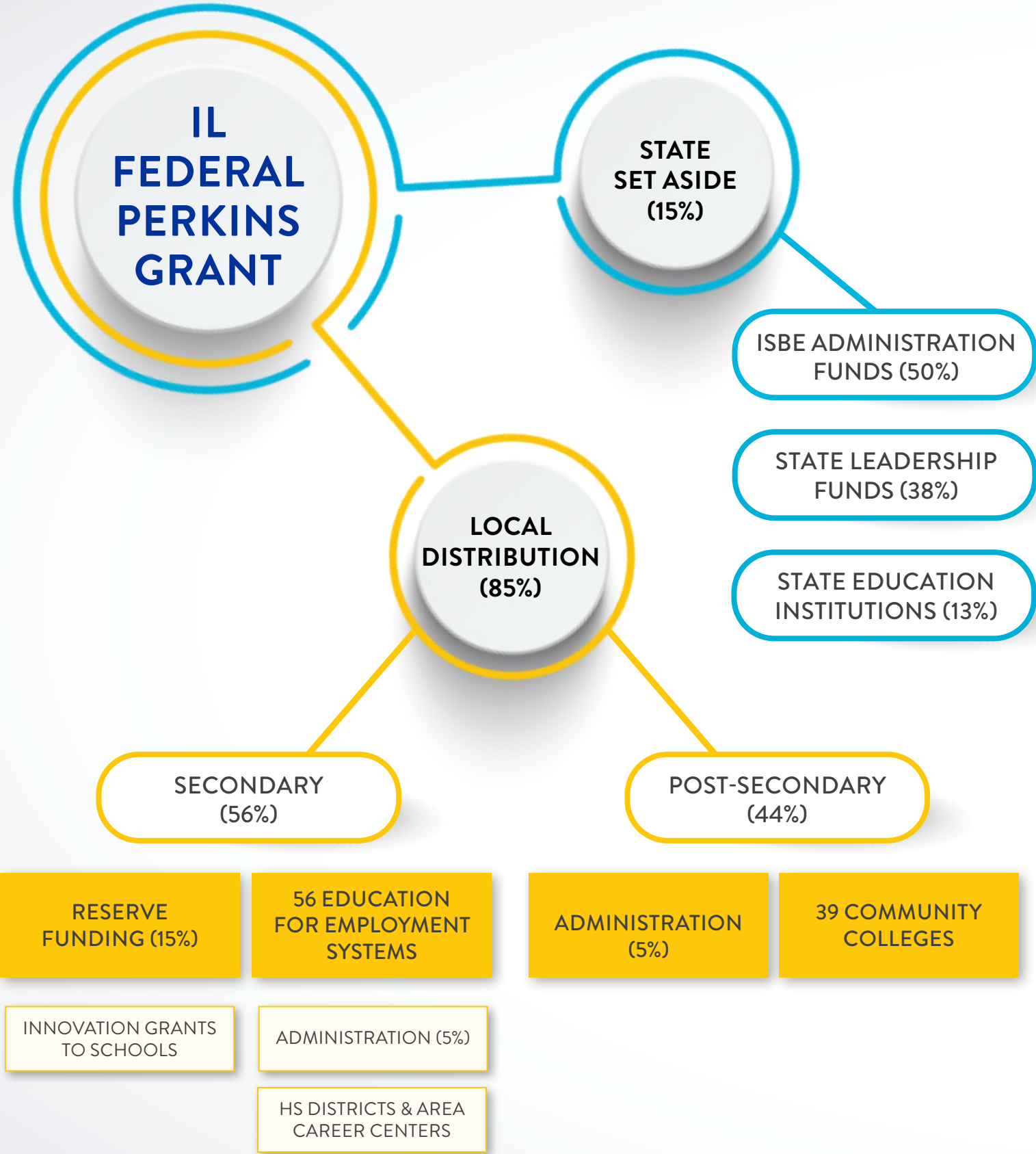


STATE CTE APPROPRIATION FLOW CHART

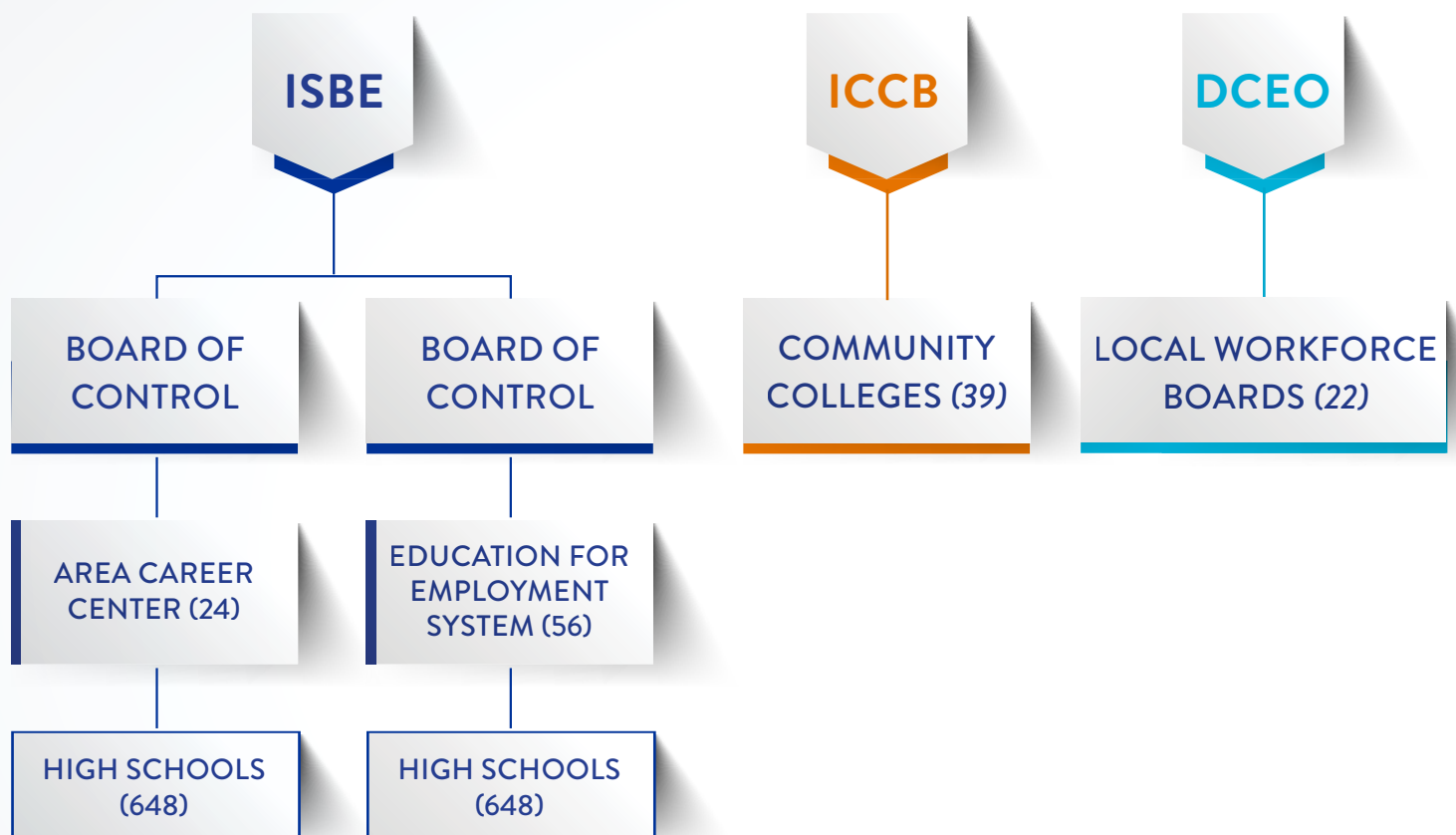


SOURCE	FY 24 APPROPRIATION	ADMINISTRATION	STATE LEADERSHIP & TECHNICAL ASSISTANCE	TARGETED GRANTS	DISTRIBUTION
Federal Perkins Funds-Secondary	\$30,234,040	\$2,393,723	\$1,809,699	-	\$25,698,935
Federal Perkins Funds-Postsecondary	\$20,156,025	\$1,007,800	\$2,015,602	-	\$17,132,623
State CTE Funds-Secondary	\$47,726,400	-	\$209,566	\$3,591,385	\$43,947,002
State CTE Funds-Postsecondary	\$18,972,900	-	\$2,519,400	-	\$16,453,500

FEDERAL PERKINS FUNDING FLOW CHART



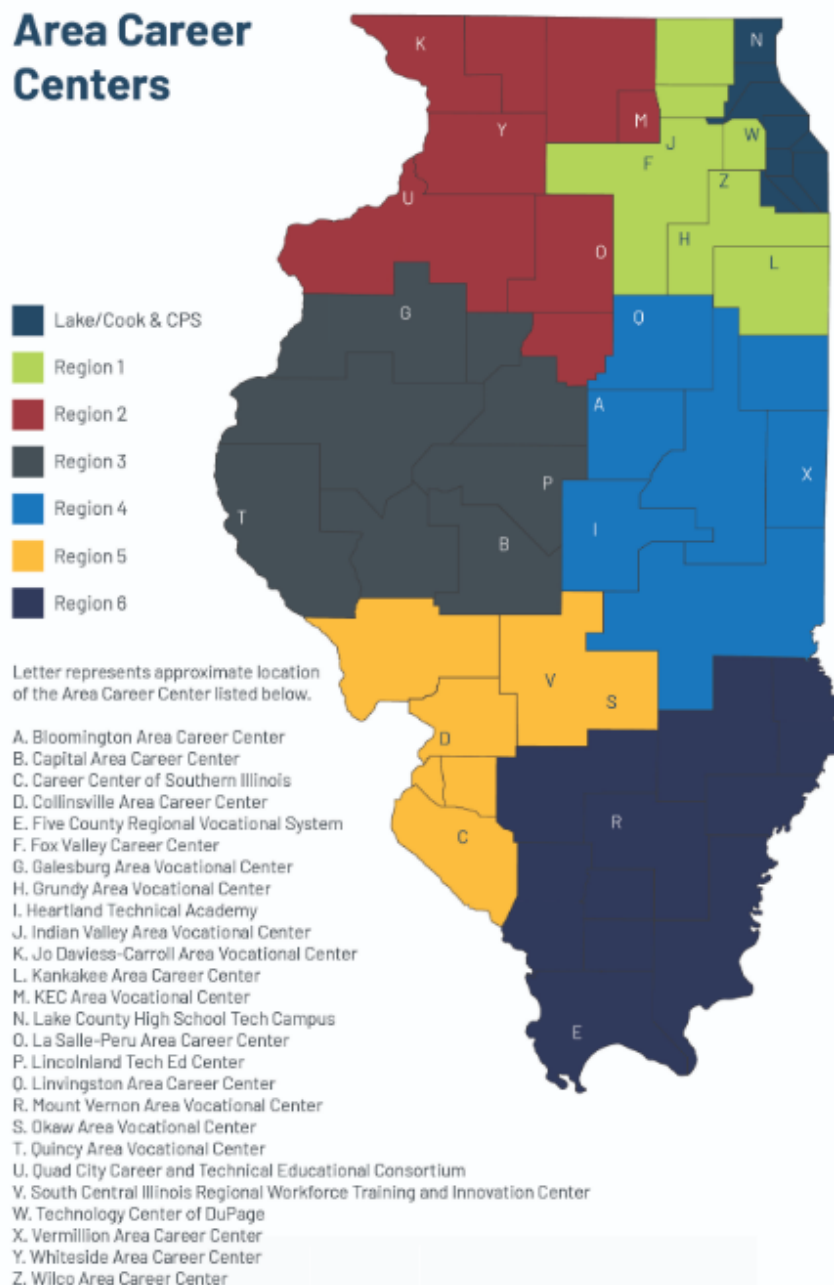
CTE DELIVERY SYSTEMS



AREA CAREER CENTERS (ACC)

ACCs operate standalone CTE campuses for participating schools allowing multiple schools to share resources and avoid duplication of services. There are 24 ACCs throughout Illinois with an average of 3 full time staff and 2 part-time staff. ISBE's [July 2022 evaluation of Illinois CTE programs](#) found that ACC's routinely followed CTE best practices,

including embedding employer skill standards into the curriculum, implementing project-based learning, aligning curriculum to industry standards, and using formative and summative assessments to validate student learning gains. The evaluation also gave ACCs high marks for communication with districts and relationship building with participating high schools.



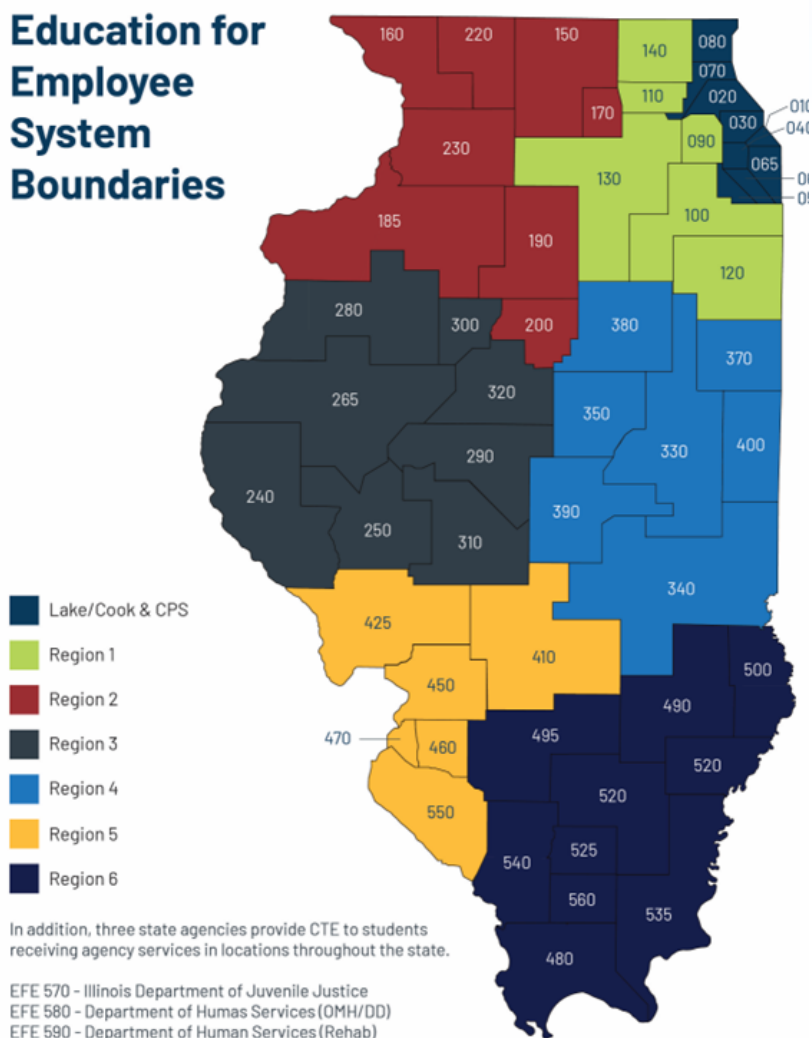
EDUCATION FOR EMPLOYMENT SYSTEMS (EFEs)

Education for Employment Systems (EFEs) are regional consortia of local districts, schools, and Area Career Centers (ACCs) that support and deliver high-quality CTE to students within their systems. To qualify for federal Perkins funding, recipients must qualify for a minimum grant of \$15,000 based on a formula driven by population and poverty. But since some districts were too small qualify for the minimum grant, EFEs were created to ensure all districts were eligible.

There are 56 EFEs throughout Illinois that each serve a region of the state with an average of 1.9 full time staff and 1.7 part time staff.² The 56 EFE systems are further consolidated into 6 EFE regions, which are distinct from other regional divisions, such as community college districts, regional education offices, or Local Workforce Boards. Three EFEs are housed within state agencies that serve secondary student populations—Illinois Department of Juvenile Justice, the Illinois Department of Human Services' Office of Mental Health Services, and the Illinois Department of Human Services' Division for Rehabilitation Services. The remaining 53 EFEs each have an EFE Director and a Board of Control. EFE Directors must possess a principal or general administrative endorsement with a Professional Educators License or CTE Educator License.

A little over 60% of EFE Directors serve solely in that role, while almost 40% also act as the ACC Director or high school CTE Director. [The July 2022 CTE evaluation](https://www.isbe.net/Documents/IL-CTE-eval-report.pdf) of the Illinois CTE delivery system found CTE staff with a single-role EFE Director received more capacity-building supports than EFE Directors serving dual roles.³

Education for Employee System Boundaries



(For instance, survey participants said 81% of single-role EFEs provided professional development, compared to just 33% of dual-role EFEs. Single-role EFEs reportedly were more likely to build business partnerships (73%) than dual-role EFEs (49%).) Single role EFE Directors brought significant value to high schools and districts serving as a liaison between education and industry partners, acting as a chief advocate for CTE, and providing programmatic and technical assistance to CTE programs.

The evaluation found few members on the EFE Boards of Control and only 61% of district superintendents included themselves as members. Additionally, few school and district staff understood the roles and responsibilities of EFE Boards of Control.

² <https://www.isbe.net/Documents/IL-CTE-eval-report.pdf>
³ <https://www.isbe.net/Documents/IL-CTE-eval-report.pdf>

⁴ http://www.iccb.org/wp-content/pdfs/reports/2021_Dual_Credit_Report_Final.pdf

NUMBER OF SCHOOLS OFFERING CTE PROGRAMS IN MULTIPLE ENDORSEMENT AREAS

Secondary schools and ACCs determine the number of CTE programs offered based on the local needs assessment and teacher availability. FY 2024 data in Table 6 below shows that 33 high schools offer at least two CTE assigned programs, 56 high schools offer three CTE assigned programs, 75 high schools offer four CTE assigned programs, 120 high schools offer five CTE assigned programs, 205 high schools offer six CTE assigned programs, and 123 high schools offer a program in all seven CTE assigned programs.

Offering	1 CTE ENDORSEMENT AREA	2 CTE ENDORSEMENT AREAS	3 CTE ENDORSEMENT AREAS	4 CTE ENDORSEMENT AREAS	5 CTE ENDORSEMENT AREAS	6 CTE ENDORSEMENT AREAS	7 CTE ENDORSEMENT AREAS
FY 2024	42	33	56	75	120	205	123
FY 2023	45	45	44	92	122	198	112
FY 2022	19	22	15	53	85	191	263
FY 2021	82	95	129	112	89	28	6
FY 2020	114	146	138	113	60	16	5

Table 5 Number of Schools Offering CTE Programs in Multiple Endorsement Areas

Source: [ISBE’s 2024 Career and Technical Education Annual Report](#)

